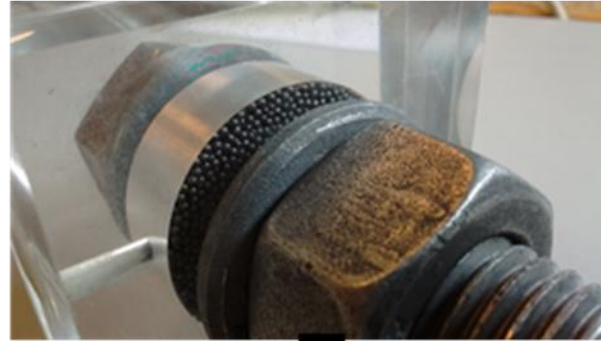
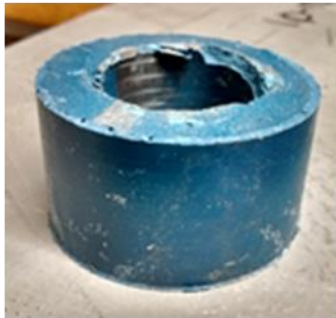


Contact point for this idea: Jan-Henk Welink TU Delft; j.h.welink@tudelft.nl, cc Milan Veljkovic; M.Veljkovic@tudelft.nl

Upscaling: *Tools for Circular Construction*

- Topic
 - Bringing tools used in a lab (TRL 5) up to commercial available usable tools (TRL 9) for reusing and demounting steel structures (buildings/bridges) for the circular economy
 - New shear connectors for demountable connection in structures made of two materials, steel and concrete
- Expected synergies and complementarities:
 - Builds on research results of on-going EU project, REDUCE
 - Lighthouse Circular Cities
- Outcomes: Commercial tools for daily use at construction sites for facilitation of the design for reuse concept
- Market & Business opportunities:
Test on bridge in the Netherlands, steel structure market
- Wanted additional partners : Ruukki, Sandvik

Tools for Circular Construction

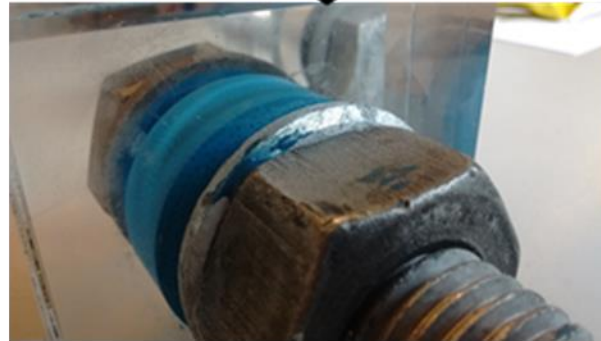


Shot

+

Resin

Injected material:
sufficiently strong,
durable, fatigue resistant,
easy to demount.



Automatic tool should be developed to improve efficiency
and competitiveness at the construction site